

# BALLYSAGGART Environmental Group

"Our mission is to engage the community and local council, stimulate interest and debate and ensure that this habitat is developed in a sustainable manner preserving it for future generations"



[www.blacklough.org](http://www.blacklough.org)

## Pond Dipping WORKSHEET 1

Do some pond dipping.

Put a tick in the tally box when you find a particular creature.

Total them all up at the end and put the number in the total box.

**Water Boatman**



Tally

Total

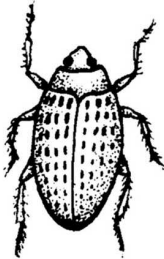
**Back Swimmer**



Tally

Total

**Water Beetle**



Tally

Total

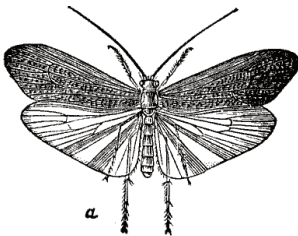
**Caddisfly Larva**



Tally

Total

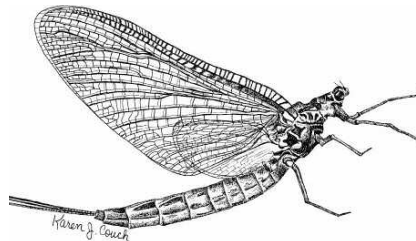
**Caddisfly Adult**



Tally

Total

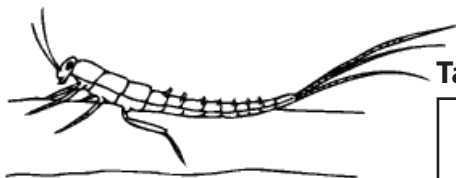
**Mayfly**



Tally

Total

**Mayfly Nymph**



Tally

Total

# BALLYSAGGART Environmental Group

"Our mission is to engage the community and local council, stimulate interest and debate and ensure that this habitat is developed in a sustainable manner preserving it for future generations"



www.blacklough.org

## Bird Identification WORKSHEET 2

Fill in the boxes using the information you've gathered.

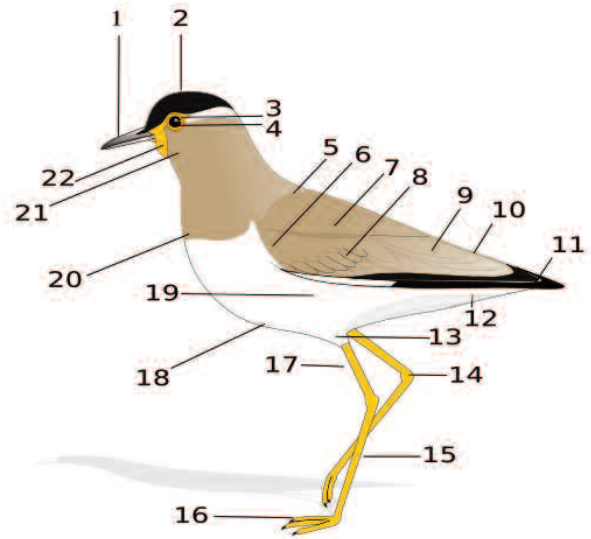
Cross reference this with the bird reference book and see if you can identify the bird correctly.

### Shape and Size

*(compare it to a bird you know)*

### Legs

*What colour are they, are they long or short?*



- |                   |               |                               |            |
|-------------------|---------------|-------------------------------|------------|
| 1. Beak           | 7. Scapulars  | 14. Tibio-tarsal articulation | 20. Breast |
| 2. Head           | 8. Coverts    | 15. Tarsus                    | 21. Throat |
| 3. Iris           | 9. Tertials   | 16. Feet                      | 22. Wattle |
| 4. Pupil          | 10. Rump      | 17. Tibia                     |            |
| 5. Mantle         | 11. Primaries | 18. Belly                     |            |
| 6. Lesser coverts | 12. Vent      | 19. Flanks                    |            |

### Feet

*Are they webbed or with claws?*

### Plumage colour (feathers)

|             |               |
|-------------|---------------|
| <b>Head</b> | <b>Breast</b> |
| <b>Back</b> | <b>Tail</b>   |

### Feet

*Are they webbed or with claws?*

### What is it doing?

### Where is it?

# BALLYSAGGART Environmental Group

"Our mission is to engage the community and local council, stimulate interest and debate and ensure that this habitat is developed in a sustainable manner preserving it for future generations"



[www.blacklough.org](http://www.blacklough.org)

## Bird Feeding WORKSHEET 3

Can you identify where the waterbirds are feeding?  
Look for these birds on the Black Lough.

| Feeding method      | Foraging on land | Surface feeding | Head under water | Up-ending | Diving |
|---------------------|------------------|-----------------|------------------|-----------|--------|
| Mallard             |                  |                 |                  |           |        |
| Coot                |                  |                 |                  |           |        |
| Moorhen             |                  |                 |                  |           |        |
| Tufted Duck         |                  |                 |                  |           |        |
| Goldeneye           |                  |                 |                  |           |        |
| Mute Swan           |                  |                 |                  |           |        |
| Great Crested Grebe |                  |                 |                  |           |        |
| Pochard             |                  |                 |                  |           |        |
| Other               |                  |                 |                  |           |        |

*Mallard*



*Coot*



*Moorhen*



*Tufted Duck*



*Goldeneye*



*Mute Swan*



*Great Crested Grebe*



*Pochard*



# BALLYSAGGART Environmental Group

*"Our mission is to engage the community and local council, stimulate interest and debate and ensure that this habitat is developed in a sustainable manner preserving it for future generations"*



[www.blacklough.org](http://www.blacklough.org)

## Word Search WORKSHEET 4

The words below are hidden in this grid.  
Can you find them?

DAMSEFLY

KINGFISHER

LEECH

DUCKWEED

TROUT

AMPHIBIAN

MALLARD

OTTER

SALMON

NEWT

MAYFLY

DIPPER

